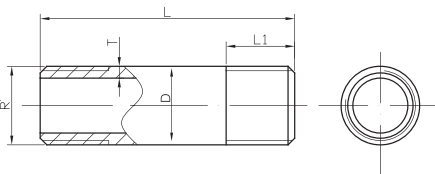


gebonipple

KRÓCIEC STALOWY GWINTOWANY DWUSTRONNIE, W WERSJI OCYNKOWANEJ I CZARNEJ



PARAMETRY: zgodnie z normą DIN EN 10241

MATERIAŁ: rura stalowa zgodnie z DIN EN 10255

GWINTY: wykonane według ISO 7/1

ROZMIARY: od 3/8" do 4"

| Rozmiar (R) gwint | | Ocynkowane - nr kat. | Czarne - nr kat. | Wymiar [mm] | | | |
|-------------------|-----------|----------------------|-------------------|-------------|-----|------|------|
| x (L) długość | | Króćce gwintowane | Króćce gwintowane | D | T | L | L1 |
| 3/8" | x 50 mm | 70.050.03V * | 70.050.03S * | 17,2 | 2,3 | 50 | 12,0 |
| 3/8" | x 60 mm | 70.060.03V * | 70.060.03S * | 17,2 | 2,3 | 60 | 12,0 |
| 3/8" | x 70 mm | 70.070.03V * | | 17,2 | 2,3 | 70 | 12,0 |
| 3/8" | x 80 mm | 70.080.03V * | 70.080.03S * | 17,2 | 2,3 | 80 | 12,0 |
| 3/8" | x 100 mm | 70.100.03V * | 70.100.03S * | 17,2 | 2,3 | 100 | 12,0 |
| 3/8" | x 120 mm | 70.120.03V * | 70.120.03S * | 17,2 | 2,3 | 120 | 12,0 |
| 3/8" | x 150 mm | 70.150.03V * | 70.150.03S * | 17,2 | 2,3 | 150 | 12,0 |
| 3/8" | x 200 mm | 70.200.03V * | 70.200.03S * | 17,2 | 2,3 | 200 | 12,0 |
| 3/8" | x 250 mm | 70.250.03V * | 70.250.03S * | 17,2 | 2,3 | 250 | 12,0 |
| 3/8" | x 300 mm | 70.300.03V * | 70.300.03S * | 17,2 | 2,3 | 300 | 12,0 |
| 3/8" | x 500 mm | 70.500.03V * | 70.500.03S * | 17,2 | 2,3 | 500 | 12,0 |
| 3/8" | x 1000 mm | 70.1000.03V * | | 17,2 | 2,3 | 1000 | 12,0 |
| 3/8" | x 1500 mm | 70.1500.03V * | | 17,2 | 2,3 | 1500 | 12,0 |
| 3/8" | x 2000 mm | 70.2000.03V * | | 17,2 | 2,3 | 2000 | 12,0 |
| 1/2" | x 30 mm | 70.030.04V * | | 21,3 | 2,6 | 30 | 15,0 |
| 1/2" | x 40 mm | 70.040.04V * | 70.040.04S * | 21,3 | 2,6 | 40 | 15,0 |
| 1/2" | x 50 mm | 70.050.04V * | 70.050.04S * | 21,3 | 2,6 | 50 | 15,0 |
| 1/2" | x 60 mm | 70.060.04V * | 70.060.04S * | 21,3 | 2,6 | 60 | 15,0 |
| 1/2" | x 70 mm | 70.070.04V * | | 21,3 | 2,6 | 70 | 15,0 |
| 1/2" | x 80 mm | 70.080.04V * | 70.080.04S * | 21,3 | 2,6 | 80 | 15,0 |
| 1/2" | x 100 mm | 70.100.04V * | 70.100.04S * | 21,3 | 2,6 | 100 | 15,0 |
| 1/2" | x 120 mm | 70.120.04V * | 70.120.04S * | 21,3 | 2,6 | 120 | 15,0 |
| 1/2" | x 150 mm | 70.150.04V * | 70.150.04S * | 21,3 | 2,6 | 150 | 15,0 |
| 1/2" | x 200 mm | 70.200.04V * | 70.200.04S * | 21,3 | 2,6 | 200 | 15,0 |
| 1/2" | x 250 mm | 70.250.04V * | 70.250.04S * | 21,3 | 2,6 | 250 | 15,0 |
| 1/2" | x 300 mm | 70.300.04V * | 70.300.04S * | 21,3 | 2,6 | 300 | 15,0 |
| 1/2" | x 400 mm | 70.400.04V * | 70.400.04S * | 21,3 | 2,6 | 400 | 15,0 |
| 1/2" | x 500 mm | 70.500.04V * | 70.500.04S * | 21,3 | 2,6 | 500 | 15,0 |
| 1/2" | x 1000 mm | 70.1000.04V * | 70.1000.04S * | 21,3 | 2,6 | 1000 | 15,0 |
| 1/2" | x 1500 mm | 70.1500.04V * | | 21,3 | 2,6 | 1500 | 15,0 |
| 1/2" | x 2000 mm | 70.2000.04V * | 70.2000.04S * | 21,3 | 2,6 | 2000 | 15,0 |
| 3/4" | x 40 mm | 70.040.05V * | 70.040.05S * | 26,9 | 2,6 | 40 | 15,0 |
| 3/4" | x 50 mm | 70.050.05V * | 70.050.05S * | 26,9 | 2,6 | 50 | 15,0 |
| 3/4" | x 60 mm | 70.060.05V * | 70.060.05S * | 26,9 | 2,6 | 60 | 15,0 |
| 3/4" | x 70 mm | 70.070.05V * | | 26,9 | 2,6 | 70 | 15,0 |
| 3/4" | x 80 mm | 70.080.05V * | 70.080.05S * | 26,9 | 2,6 | 80 | 15,0 |
| 3/4" | x 100 mm | 70.100.05V * | 70.100.05S * | 26,9 | 2,6 | 100 | 15,0 |
| 3/4" | x 120 mm | 70.120.05V * | 70.120.05S * | 26,9 | 2,6 | 120 | 15,0 |
| 3/4" | x 150 mm | 70.150.05V * | 70.150.05S * | 26,9 | 2,6 | 150 | 15,0 |
| 3/4" | x 200 mm | 70.200.05V * | 70.200.05S * | 26,9 | 2,6 | 200 | 15,0 |
| 3/4" | x 250 mm | 70.250.05V * | 70.250.05S * | 26,9 | 2,6 | 250 | 15,0 |
| 3/4" | x 300 mm | 70.300.05V * | 70.300.05S * | 26,9 | 2,6 | 300 | 15,0 |
| 3/4" | x 400 mm | 70.400.05V * | 70.400.05S * | 26,9 | 2,6 | 400 | 15,0 |
| 3/4" | x 500 mm | 70.500.05V * | 70.500.05S * | 26,9 | 2,6 | 500 | 15,0 |
| 3/4" | x 1000 mm | 70.1000.05V * | 70.1000.05S * | 26,9 | 2,6 | 1000 | 15,0 |
| 3/4" | x 1500 mm | 70.1500.05V * | 70.1500.05S * | 26,9 | 2,6 | 1500 | 15,0 |
| 3/4" | x 2000 mm | 70.2000.05V * | 70.2000.05S * | 26,9 | 2,6 | 2000 | 15,0 |

* tylko pod zamówienie

| Rozmiar (R) gwint | | Ocynkowane - nr kat. | Czarne - nr kat. | Wymiar [mm] | | | |
|-------------------|-----------|----------------------|-------------------|-------------|-----|------|------|
| x (L) długość | | Krócce gwintowane | Krócce gwintowane | D | T | L | L1 |
| 1" | x 40 mm | 70.040.06V * | 70.040.06S * | 33,7 | 3,2 | 40 | 17,0 |
| 1" | x 50 mm | 70.050.06V | 70.050.06S * | 33,7 | 3,2 | 50 | 17,0 |
| 1" | x 60 mm | 70.060.06V | 70.060.06S | 33,7 | 3,2 | 60 | 17,0 |
| 1" | x 70 mm | 70.070.06V * | | 33,7 | 3,2 | 70 | 17,0 |
| 1" | x 80 mm | 70.080.06V | 70.080.06S * | 33,7 | 3,2 | 80 | 17,0 |
| 1" | x 100 mm | 70.100.06V * | 70.100.06S | 33,7 | 3,2 | 100 | 17,0 |
| 1" | x 110 mm | 70.110.06V | | 33,7 | 3,2 | 100 | 17,0 |
| 1" | x 120 mm | 70.120.06V | 70.120.06S * | 33,7 | 3,2 | 120 | 17,0 |
| 1" | x 150 mm | 70.150.06V | 70.150.06S | 33,7 | 3,2 | 150 | 17,0 |
| 1" | x 200 mm | 70.200.06V | 70.200.06S | 33,7 | 3,2 | 200 | 17,0 |
| 1" | x 250 mm | 70.250.06V | 70.250.06S | 33,7 | 3,2 | 250 | 17,0 |
| 1" | x 300 mm | 70.300.06V | 70.300.06S | 33,7 | 3,2 | 300 | 17,0 |
| 1" | x 400 mm | 70.400.06V | 70.400.06S | 33,7 | 3,2 | 400 | 17,0 |
| 1" | x 500 mm | 70.500.06V * | 70.500.06S | 33,7 | 3,2 | 500 | 17,0 |
| 1" | x 600 mm | 70.600.06V | | 33,7 | 3,2 | 600 | 17,0 |
| 1" | x 1000 mm | 70.1000.06V | 70.1000.06S | 33,7 | 3,2 | 1000 | 17,0 |
| 1" | x 1500 mm | 70.1500.06V | | 33,7 | 3,2 | 1500 | 17,0 |
| 1" | x 2000 mm | 70.2000.06V * | 70.2000.06S | 33,7 | 3,2 | 2000 | 17,0 |
| 1 1/4" | x 50 mm | 70.050.07V * | 70.050.07S * | 42,4 | 3,2 | 50 | 20,0 |
| 1 1/4" | x 60 mm | 70.060.07V | 70.060.07S | 42,4 | 3,2 | 60 | 20,0 |
| 1 1/4" | x 70 mm | 70.070.07V * | | 42,4 | 3,2 | 70 | 20,0 |
| 1 1/4" | x 80 mm | 70.080.07V | 70.080.07S * | 42,4 | 3,2 | 80 | 20,0 |
| 1 1/4" | x 100 mm | 70.100.07V | 70.100.07S * | 42,4 | 3,2 | 100 | 20,0 |
| 1 1/4" | x 120 mm | 70.120.07V | 70.120.07S * | 42,4 | 3,2 | 120 | 20,0 |
| 1 1/4" | x 150 mm | 70.150.07V | 70.150.07S * | 42,4 | 3,2 | 150 | 20,0 |
| 1 1/4" | x 200 mm | 70.200.07V | 70.200.07S * | 42,4 | 3,2 | 200 | 20,0 |
| 1 1/4" | x 250 mm | 70.250.07V | 70.250.07S * | 42,4 | 3,2 | 250 | 20,0 |
| 1 1/4" | x 300 mm | 70.300.07V | 70.300.07S * | 42,4 | 3,2 | 300 | 20,0 |
| 1 1/4" | x 400 mm | 70.400.07V | 70.400.07S * | 42,4 | 3,2 | 400 | 20,0 |
| 1 1/4" | x 500 mm | 70.500.07V | 70.500.07S * | 42,4 | 3,2 | 500 | 20,0 |
| 1 1/4" | x 1000 mm | 70.1000.07V | 70.1000.07S * | 42,4 | 3,2 | 1000 | 20,0 |
| 1 1/4" | x 2000 mm | 70.2000.07V * | | 42,4 | 3,2 | 2000 | 20,0 |
| 1 1/2" | x 50 mm | 70.050.08V * | 70.050.08S * | 48,3 | 3,2 | 50 | 20,0 |
| 1 1/2" | x 60 mm | 70.060.08V | 70.060.08S | 48,3 | 3,2 | 60 | 20,0 |
| 1 1/2" | x 80 mm | 70.080.08V * | 70.080.08S * | 48,3 | 3,2 | 80 | 20,0 |
| 1 1/2" | x 100 mm | 70.100.08V | 70.100.08S | 48,3 | 3,2 | 100 | 20,0 |
| 1 1/2" | x 120 mm | 70.120.08V | 70.120.08S * | 48,3 | 3,2 | 120 | 20,0 |
| 1 1/2" | x 150 mm | 70.150.08V | 70.150.08S | 48,3 | 3,2 | 150 | 20,0 |
| 1 1/2" | x 200 mm | 70.200.08V | 70.200.08S | 48,3 | 3,2 | 200 | 20,0 |
| 1 1/2" | x 250 mm | 70.250.08V | 70.250.08S * | 48,3 | 3,2 | 250 | 20,0 |
| 1 1/2" | x 300 mm | 70.300.08V | 70.300.08S * | 48,3 | 3,2 | 300 | 20,0 |
| 1 1/2" | x 400 mm | 70.400.08V | 70.400.08S * | 48,3 | 3,2 | 400 | 20,0 |
| 1 1/2" | x 500 mm | 70.500.08V | 70.500.08S * | 48,3 | 3,2 | 500 | 20,0 |
| 1 1/2" | x 1000 mm | 70.1000.08V | 70.1000.08S * | 48,3 | 3,2 | 1000 | 20,0 |
| 2" | x 50 mm | 70.050.09V * | 70.050.09S * | 60,3 | 3,6 | 50 | 23,0 |
| 2" | x 60 mm | 70.060.09V | 70.060.09S | 60,3 | 3,6 | 60 | 23,0 |
| 2" | x 80 mm | 70.080.09V * | 70.080.09S * | 60,3 | 3,6 | 80 | 23,0 |
| 2" | x 100 mm | 70.100.09V | 70.100.09S | 60,3 | 3,6 | 100 | 23,0 |
| 2" | x 120 mm | 70.120.09V | 70.120.09S * | 60,3 | 3,6 | 120 | 23,0 |
| 2" | x 150 mm | 70.150.09V | 70.150.09S * | 60,3 | 3,6 | 150 | 23,0 |
| 2" | x 200 mm | 70.200.09V | 70.200.09S * | 60,3 | 3,6 | 200 | 23,0 |
| 2" | x 250 mm | 70.250.09V | 70.250.09S * | 60,3 | 3,6 | 250 | 23,0 |
| 2" | x 300 mm | 70.300.09V | 70.300.09S * | 60,3 | 3,6 | 300 | 23,0 |
| 2" | x 400 mm | 70.400.09V | 70.400.09S * | 60,3 | 3,6 | 400 | 23,0 |
| 2" | x 500 mm | 70.500.09V | 70.500.09S * | 60,3 | 3,6 | 500 | 23,0 |
| 2" | x 1000 mm | 70.1000.09V | 70.1000.09S * | 60,3 | 3,6 | 1000 | 23,0 |
| 2 1/2" | x 60 mm | 70.060.10V * | 70.060.10S * | 76,1 | 3,6 | 60 | 27,0 |
| 2 1/2" | x 80 mm | 70.080.10V * | 70.080.10S * | 76,1 | 3,6 | 80 | 27,0 |
| 2 1/2" | x 100 mm | 70.100.10V * | 70.100.10S * | 76,1 | 3,6 | 100 | 27,0 |
| 2 1/2" | x 120 mm | 70.120.10V * | 70.120.10S * | 76,1 | 3,6 | 120 | 27,0 |
| 2 1/2" | x 150 mm | 70.150.10V * | 70.150.10S * | 76,1 | 3,6 | 150 | 27,0 |
| 2 1/2" | x 200 mm | 70.200.10V * | 70.200.10S * | 76,1 | 3,6 | 200 | 27,0 |
| 2 1/2" | x 250 mm | 70.250.10V * | 70.250.10S * | 76,1 | 3,6 | 250 | 27,0 |
| 2 1/2" | x 300 mm | 70.300.10V * | 70.300.10S * | 76,1 | 3,6 | 300 | 27,0 |
| 2 1/2" | x 400 mm | 70.400.10V * | 70.400.10S * | 76,1 | 3,6 | 400 | 27,0 |
| 2 1/2" | x 500 mm | 70.500.10V * | 70.500.10S * | 76,1 | 3,6 | 500 | 27,0 |
| 2 1/2" | x 1000 mm | 70.1000.10V * | 70.1000.10S * | 76,1 | 3,6 | 1000 | 27,0 |

* tylko pod zamówienie

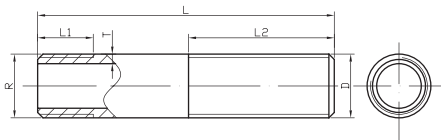


KRÓCIEC STALOWY GWINTOWANY DWUSTRONNIE, W WERSJI OCYNKOWANEJ I CZARNEJ

| Rozmiar (R) gwint | | Ocynkowane - nr kat. | Czarne - nr kat. | Wymiar [mm] | | | |
|-------------------|-----------|----------------------|-------------------|-------------|-----|------|------|
| x (L) długość | | Króćce gwintowane | Króćce gwintowane | D | T | L | L1 |
| 3" | x 80 mm | 70.080.11V * | 70.080.11S * | 88,9 | 4,0 | 80 | 30,0 |
| 3" | x 100 mm | 70.100.11V * | 70.100.11S * | 88,9 | 4,0 | 100 | 30,0 |
| 3" | x 120 mm | 70.120.11V * | 70.120.11S * | 88,9 | 4,0 | 120 | 30,0 |
| 3" | x 150 mm | 70.150.11V * | 70.150.11S * | 88,9 | 4,0 | 150 | 30,0 |
| 3" | x 200 mm | 70.200.11V * | 70.200.11S * | 88,9 | 4,0 | 200 | 30,0 |
| 3" | x 250 mm | 70.250.11V * | 70.250.11S * | 88,9 | 4,0 | 250 | 30,0 |
| 3" | x 300 mm | 70.300.11V * | 70.300.11S * | 88,9 | 4,0 | 300 | 30,0 |
| 3" | x 400 mm | 70.400.11V * | 70.400.11S * | 88,9 | 4,0 | 400 | 30,0 |
| 3" | x 500 mm | 70.500.11V * | 70.500.11S * | 88,9 | 4,0 | 500 | 30,0 |
| 3" | x 1000 mm | 70.1000.11V * | 70.1000.11S * | 88,9 | 4,0 | 1000 | 30,0 |
| 4" | x 100 mm | 70.100.12V * | 70.100.12S * | 114,3 | 4,5 | 100 | 36,0 |
| 4" | x 120 mm | 70.120.12V * | 70.120.12S * | 114,3 | 4,5 | 120 | 36,0 |
| 4" | x 150 mm | 70.150.12V * | 70.150.12S * | 114,3 | 4,5 | 150 | 36,0 |
| 4" | x 200 mm | 70.200.12V * | 70.200.12S * | 114,3 | 4,5 | 200 | 36,0 |
| 4" | x 250 mm | 70.250.12V * | 70.250.12S * | 114,3 | 4,5 | 250 | 36,0 |
| 4" | x 300 mm | 70.300.12V * | 70.300.12S * | 114,3 | 4,5 | 300 | 36,0 |
| 4" | x 400 mm | 70.400.12V * | 70.400.12S * | 114,3 | 4,5 | 400 | 36,0 |
| 4" | x 500 mm | 70.500.12V * | 70.500.12S * | 114,3 | 4,5 | 500 | 36,0 |
| 4" | x 1000 mm | 70.1000.12V * | 70.1000.12S * | 114,3 | 4,5 | 1000 | 36,0 |

* tylko pod zamówienie

KRÓCIEC STALOWY GWINTOWANY DWUSTRONNIE, DŁUGI GWINT W WERSJI OCYNKOWANEJ I CZARNEJ



PARAMETRY: zgodnie z normą DIN EN 10241

MATERIAŁ: rura stalowa zgodnie z DIN EN 10255

GWINTY: wykonane według ISO 7/1

ROZMIARY: od 3/8" do 2"

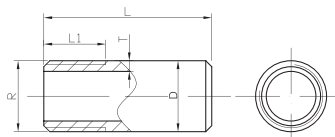
| Rozmiar (R) gwint | | Ocynkowane - nr kat. | Czarne - nr kat. | Wymiar [mm] | | | | | |
|-------------------|----------|----------------------|-------------------|-------------|-----|-----|----|----|--|
| x (L) długość | | Króćce gwintowane | Króćce gwintowane | D | T | L | L1 | L2 | |
| 3/8" | x 100 mm | 71.100.03V | 71.100.03S * | 17,2 | 2,3 | 100 | 12 | 50 | |
| 3/8" | x 150 mm | 71.150.03V * | 71.150.03S * | 17,2 | 2,3 | 150 | 12 | 60 | |
| 3/8" | x 200 mm | 71.200.03V * | 71.200.03S * | 17,2 | 2,3 | 200 | 12 | 60 | |
| 3/8" | x 300 mm | 71.300.03V | 71.300.03S * | 17,2 | 2,3 | 300 | 12 | 60 | |
| 1/2" | x 100 mm | 71.100.04V | 71.100.04S * | 21,3 | 2,6 | 100 | 15 | 50 | |
| 1/2" | x 150 mm | 71.150.04V * | 71.150.04S * | 21,3 | 2,6 | 150 | 15 | 60 | |
| 1/2" | x 200 mm | 71.200.04V * | 71.200.04S * | 21,3 | 2,6 | 200 | 15 | 60 | |
| 1/2" | x 300 mm | 71.300.04V * | 71.300.04S * | 21,3 | 2,6 | 300 | 15 | 60 | |
| 3/4" | x 100 mm | 71.100.05V * | 71.100.05S | 26,9 | 2,6 | 100 | 15 | 50 | |
| 3/4" | x 120 mm | 71.120.05V | 71.120.05S | 26,9 | 2,6 | 120 | 15 | 50 | |
| 3/4" | x 150 mm | 71.150.05V | 71.150.05S * | 26,9 | 2,6 | 150 | 15 | 60 | |
| 3/4" | x 200 mm | 71.200.05V * | 71.200.05S * | 26,9 | 2,6 | 200 | 15 | 60 | |
| 3/4" | x 300 mm | 71.300.05V * | 71.300.05S * | 26,9 | 2,6 | 300 | 15 | 60 | |

| Rozmiar (R) gwint | | | Ocynkowane - nr kat. | Czarne - nr kat. | Wymiar [mm] | | | | |
|-------------------|---|--------|----------------------|-------------------|-------------|-----|-----|----|----|
| x (L) długość | | | Króćce gwintowane | Króćce gwintowane | D | T | L | L1 | L2 |
| 1" | x | 100 mm | 71.100.06V * | 71.100.06S * | 33,7 | 3,2 | 100 | 17 | 50 |
| 1" | x | 140 mm | 71.140.06V | 71.140.06S | 33,7 | 3,2 | 140 | 17 | 50 |
| 1" | x | 150 mm | 71.150.06V | 71.150.06S * | 33,7 | 3,2 | 150 | 17 | 70 |
| 1" | x | 200 mm | 71.200.06V * | 71.200.06S * | 33,7 | 3,2 | 200 | 17 | 70 |
| 1" | x | 300 mm | 71.300.06V * | 71.300.06S * | 33,7 | 3,2 | 300 | 17 | 70 |
| 1 1/4" | x | 100 mm | 71.100.07V * | 71.100.07S * | 42,4 | 3,2 | 100 | 20 | 50 |
| 1 1/4" | x | 150 mm | 71.150.07V * | 71.150.07S * | 42,4 | 3,2 | 150 | 20 | 70 |
| 1 1/4" | x | 200 mm | 71.200.07V * | 71.200.07S * | 42,4 | 3,2 | 200 | 20 | 70 |
| 1 1/4" | x | 300 mm | 71.300.07V * | 71.300.07S * | 42,4 | 3,2 | 300 | 20 | 70 |
| 1 1/2" | x | 100 mm | 71.100.08V * | 71.100.08S * | 48,3 | 3,2 | 100 | 20 | 50 |
| 1 1/2" | x | 150 mm | 71.150.08V * | 71.150.08S * | 48,3 | 3,2 | 150 | 20 | 70 |
| 1 1/2" | x | 180 mm | 71.180.08S * | 71.180.08S * | 48,3 | 3,2 | 180 | 20 | 70 |
| 1 1/2" | x | 200 mm | 71.200.08V * | 71.200.08S * | 48,3 | 3,2 | 200 | 20 | 70 |
| 1 1/2" | x | 300 mm | 71.300.08V * | 71.300.08S * | 48,3 | 3,2 | 300 | 20 | 70 |
| 2" | x | 100 mm | 71.100.09V * | 71.100.09S * | 60,3 | 3,6 | 100 | 23 | 50 |
| 2" | x | 150 mm | 71.150.09V * | 71.150.09S * | 60,3 | 3,6 | 150 | 23 | 80 |
| 2" | x | 170 mm | 71.170.09S * | 71.170.09S * | 60,3 | 3,6 | 170 | 23 | 80 |
| 2" | x | 200 mm | 71.200.09V * | 71.200.09S * | 60,3 | 3,6 | 200 | 23 | 80 |
| 2" | x | 300 mm | 71.300.09V * | 71.300.09S * | 60,3 | 3,6 | 300 | 23 | 80 |

* tylko pod zamówienie



KRÓCIEC STALOWY GWINTOWANY JEDNOSTRONNIE, W WERSJI OCYNKOWANEJ I CZARNEJ



PARAMETRY: zgodnie z normą DIN EN 10241

MATERIAŁ: rura stalowa zgodnie z DIN EN 10255

GWINTY: wykonane według ISO 7/1

ROZMIARY: od 3/8" do 2"

| Rozmiar (R) gwint | | Ocynkowane - nr kat. | Czarne - nr kat. | Wymiar [mm] | | | | |
|-------------------|---|----------------------|-------------------|--------------|------|-----|-----|----|
| x (L) długość | | Króćce gwintowane | Króćce gwintowane | D | T | L | L1 | |
| 3/8" | x | 60 mm | 72.060.03V * | 72.060.03S * | 17,2 | 2,3 | 60 | 12 |
| 3/8" | x | 100 mm | 72.100.03V * | 72.100.03S * | 17,2 | 2,3 | 100 | 12 |
| 3/8" | x | 150 mm | 72.150.03V * | 72.150.03S * | 17,2 | 2,3 | 150 | 12 |
| 3/8" | x | 200 mm | 72.200.03V * | 72.200.03S * | 17,2 | 2,3 | 200 | 12 |
| 1/2" | x | 60 mm | | 72.060.04S | 21,3 | 2,6 | 60 | 15 |
| 1/2" | x | 100 mm | 72.100.04V | 72.100.04S | 21,3 | 2,6 | 100 | 15 |
| 1/2" | x | 150 mm | 72.150.04V * | 72.150.04S | 21,3 | 2,6 | 150 | 15 |
| 1/2" | x | 200 mm | 72.200.04V * | 72.200.04S | 21,3 | 2,6 | 200 | 15 |
| 1/2" | x | 300 mm | 72.300.04V * | 72.300.04S * | 21,3 | 2,6 | 300 | 15 |
| 3/4" | x | 100 mm | 72.100.05V * | 72.100.05S | 26,9 | 2,6 | 100 | 15 |
| 3/4" | x | 150 mm | 72.150.05V * | 72.150.05S | 26,9 | 2,6 | 150 | 15 |
| 3/4" | x | 200 mm | 72.200.05V * | 72.200.05S | 26,9 | 2,6 | 200 | 15 |
| 3/4" | x | 300 mm | 72.300.05V * | 72.300.05S * | 26,9 | 2,6 | 300 | 15 |

| Rozmiar (R) gwint | | Ocynkowane - nr kat. | Czarne - nr kat. | Wymiar [mm] | | | |
|-------------------|----------|----------------------|-------------------|-------------|-----|-----|-----|
| x (L) długość | | Króćce gwintowane | Króćce gwintowane | D | T | L | L1 |
| 1" | x 100 mm | 72.100.06V * | 72.100.06S | 33,7 | 3,2 | 100 | 17 |
| 1" | x 150 mm | 72.150.06V * | 72.150.06S | 33,7 | 3,2 | 150 | 17 |
| 1" | x 200 mm | 72.200.06V * | 72.200.06S * | 33,7 | 3,2 | 200 | 17 |
| 1" | x 300 mm | 72.300.06V * | 72.300.06S * | 33,7 | 3,2 | 300 | 17 |
| 1 1/4" | x 100 mm | 72.100.07V * | 72.100.07S | 42,4 | 3,2 | 100 | 20 |
| 1 1/4" | x 150 mm | 72.150.07V * | 72.150.07S | 42,4 | 3,2 | 150 | 20 |
| 1 1/4" | x 200 mm | 72.200.07V * | 72.200.07S * | 42,4 | 3,2 | 200 | 20 |
| 1 1/4" | x 250 mm | 72.250.07V * | 72.250.07S * | 42,4 | 3,2 | 250 | 20 |
| 1 1/4" | x 300 mm | 72.300.07V * | 72.300.07S * | 42,4 | 3,2 | 300 | 20 |
| 1 1/2" | x 100 mm | 72.100.08V * | 72.100.08S | 48,3 | 3,2 | 100 | 20 |
| 1 1/2" | x 150 mm | 72.150.08V * | 72.150.08S | 48,3 | 3,2 | 150 | 20 |
| 1 1/2" | x 200 mm | 72.200.08V * | 72.200.08S * | 48,3 | 3,2 | 200 | 20 |
| 1 1/2" | x 250 mm | 72.250.08V * | 72.250.08S * | 48,3 | 3,2 | 250 | 20 |
| 1 1/2" | x 300 mm | 72.300.08V * | 72.300.08S * | 48,3 | 3,2 | 300 | 20 |
| 2" | x 100 mm | 72.100.09V * | 72.100.09S | 60,3 | 3,6 | 100 | 23 |
| 2" | x 150 mm | 72.150.09V * | 72.150.09S | 60,3 | 3,6 | 150 | 23 |
| 2" | x 200 mm | 72.200.09V * | 72.200.09S * | 60,3 | 3,6 | 200 | 23 |
| 2" | x 250 mm | 72.250.09V * | 72.250.09S * | 60,3 | 3,6 | 250 | 23 |
| 2" | x 300 mm | 72.300.09V * | 72.300.09S * | 60,3 | 3,6 | 300 | 23 |
| 3" | x 80 mm | | 72.080.11S | | | | 80 |
| 3" | x 100 mm | | 72.100.11S | | | | 100 |
| 3" | x 150 mm | | 72.150.11S | | | | 150 |
| 4" | x 100 mm | | 72.100.12S | | | | 100 |

* tylko pod zamówienie

CERTYFIKATY

- Króćce GEBO Nipple posiadają Atest higieniczny wydany przez Państwowy Zakład Higieny nr BK/W/0613/01/2018
- Najpopularniejsze typy dostępne od ręki. Inne – tylko pod zamówienie. Szczegółowe informacje dostępne w cenniku GEBO.

NARODOWY INSTYTUT ZDROWIA PUBLICZNEGO
- Państwowy Zakład Higieny
Zakład Bezpieczeństwa Zdrowotnego Środowiska

ATEST HIGIENICZNY BK/W/0613/01/2018
HYGIENIC CERTIFICATE ORIGINAL
NATIONAL INSTITUTE OF PUBLIC HEALTH - NATIONAL INSTITUTE OF HYGIENE

Wzrost / product: Króćce stalowe gwintowane ocynkowane Gebo Nipple

Zawieszenie / containing: stal ocynkowana

Przeznaczenie do / destined: systema wentylacyjna elementów korymbrak, w tym składowych do sprężarki wody przeznaczonych do sprzedaży przez hurt

Wymieniony system produkcji odpowiada wymaganiom higienicznym przy spełnieniu następujących warunków / The above-mentioned product is acceptable according to hygienic criteria with the following conditions:
Atest higieniczny nie dotyczy parametrów technicznych wyrobów / Hygienic certificate does not apply to technical parameters of the products.

Wydawca / producer: Jian Weihe Casting Co., Ltd.
3, Nianmen Road, Pinggu County, Jilin 250400, China
Niniejszy dokument wydany na wniosek / This certificate issued for: Gebo Technika International Sp. z o.o. (05.276) Włochy

Atest może być odwołany lub anulowany po przebadaniu elementów dowolnie przez niezależną stronę. Niniejszy atest może zostać anulowany po 2017-08-31, jeśli w przypadku zmian w recepturze albo w technologii wyprodukowania wyrobów.

The certificate may be cancelled or cancelled after appropriate notification. The certificate loses its validity after 2017-08-31 or in the case of change in composition or in technology of production.

Data wydania atestu higienicznego: 31 sierpnia 2018
The date of issue of the certificate: 31st August 2018

Kontrola systemu zarządzania jakością higienicznego: Po zaskądzeniu przez higienicznego. Zakład Bezpieczeństwa Zdrowotnego Środowiska
Zakład Bezpieczeństwa Zdrowotnego Środowiska ul. ul. Józefa Bonieckiego 100-101, 02-226 Warszawa, (Warszawa, St. Poland)
02-226 Warszawa, ul. Józefa Bonieckiego 100-101, 02-226 Warszawa, (Warszawa, St. Poland)
www.on.dzkgi.gov.pl tel. +48 22 94 71 700, +48 22 94 71 300, fax. +48 22 94 71 327

